



## DTL Blenders

### Typical Applications:

#### Blending Stabilizers

Such as with fresh milk, liquid eggs, ice cream mix

#### Blending Liquid Syrup

Such as with raw sugar or water

#### Blending Food Products

Such as whey and water, powdered eggs to liquid, liquid syrup with liquid eggs and flavorings

#### Blending Chemical Products

Such as sodium silicoaluminate, film solution, irium, fertilizer

Extremely compact and simple in operation, these powerful blenders are ideal for either continuous or batch processes that require recirculation. The design employs a unique “tube-in-tube” principle. Pre- and post-blending is unnecessary in most operations; lumping, flooding or foaming, often can be eliminated. This is because Waukesha DTL Blenders integrate dry ingredients into liquid without air.

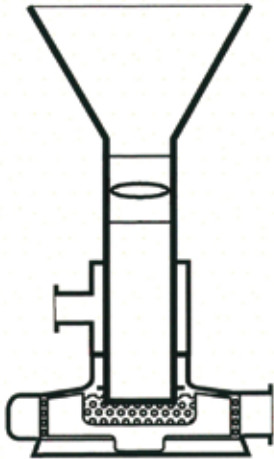
### Features

- Uniform, continuous material absorption
- Simple to operate
- Mix without adding air for less foaming or lumping
- Blend up to 100 lbs./minute
- Incorporate easily into existing systems
- Accepts “wash down” motor
- Portable units (optional)

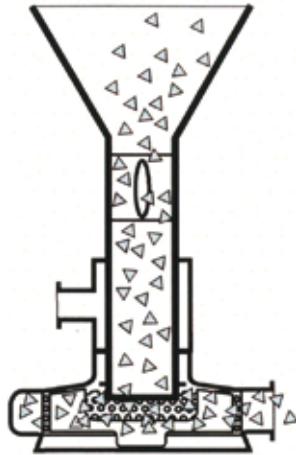


# DTL Blenders

## *Blending Action*

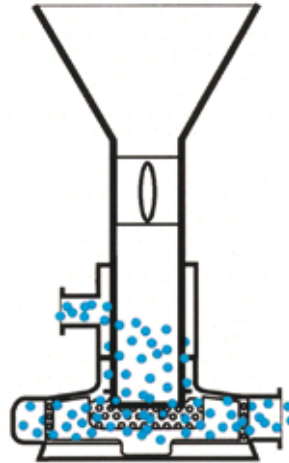


**TUBE-IN-TUBE**



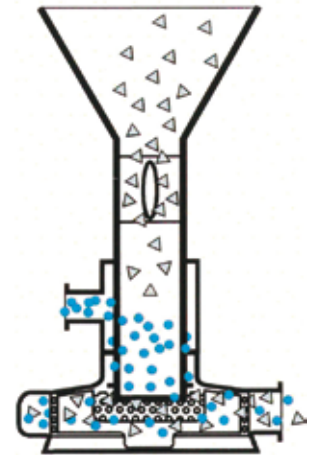
**DRY**

Add powder to funnel to begin process



**WET**

Add liquid to powder stream



**BLEND**

Incorporate powder and liquid into blended solution

**ISO 9001  
CERTIFIED**



**SPX**<sup>®</sup>

**PROCESS EQUIPMENT**

Your local contact:



SPX Process Equipment

611 Sugar Creek Road

Delavan, WI 53115

Phone: (262)728-1900 or (800)252-5200 Fax: (262)728-4904 or (800)252-5012

E-mail: [wcb@spx.com](mailto:wcb@spx.com)

For more information about our worldwide locations, approvals, certifications, and local representatives, please visit [www.spxpe.com](http://www.spxpe.com).

SPX Corporation reserves the right to incorporate our latest design and material changes without notice or obligation.

Design features, materials of construction and dimensional data, as described in this bulletin, are provided for your information only and should not be relied upon unless confirmed in writing.

Issued: 02/2009 FH-1706

Copyright © 2006, 2009 SPX Corporation