

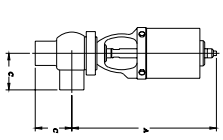
VALVE DIMENSIONS BY CONNECTOR TYPE

VALVE SIZE	A	B	C BUTT WELD	C ₁ LANS	C ₂ LANS	D	E
1	12.56	2.68	2.00	3.75	3.12	.86	—
1 1/2	12.56	2.68	2.25	3.19	2.75	.86	3.18
2	12.56	2.68	2.50	2.75	2.31	1.49	3.20
2 1/2	12.56	2.68	2.75	2.31	1.88	1.89	3.20
3	12.56	4.19	3.50	4.47	3.75	1.89	3.20
4	12.56	5.11	3.88	5.22	4.50	2.21	4.29

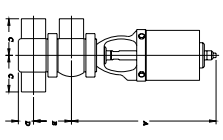
The "A" dimension shown is for a 4-hole (70°) flange connection.
 For 2-hole (125°) flange connection add 1.31 inches (33.27mm) to the "A" dimension.
 For 6-hole (125°) flange connection add 3.07 inches (77.96mm) to the "A" dimension.
 For the control leg option add 3.29 inches (83.6mm) to the "A" dimension.

MANIFOLDING VALVE BODY DIMENSIONS

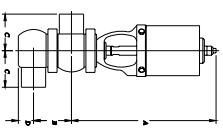
VALVE SIZE	A	B	C BUTT WELD
1	12.56	1.96	4.00
1 1/2	12.56	1.96	4.00
2	12.56	2.46	4.00
2 1/2	12.56	2.46	4.00
3	12.56	2.64	4.00
4	12.56	3.11	6.00



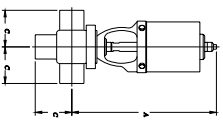
MODEL W61-T



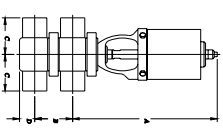
MODEL W61-TD



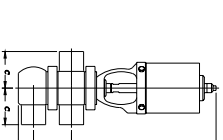
MODEL W61-TS



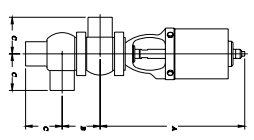
MODEL W61-C



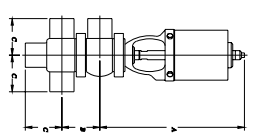
MODEL W61-CD



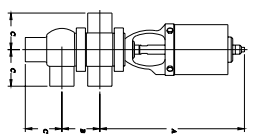
MODEL W61-CS



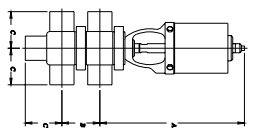
MODEL W62-T



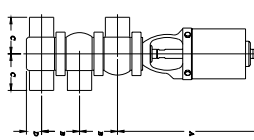
MODEL W62-TD



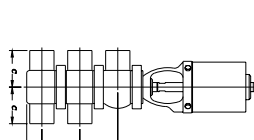
MODEL W62-TS



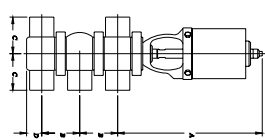
MODEL W62-C



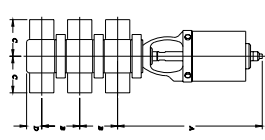
MODEL W62-TD



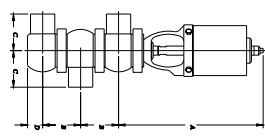
MODEL W62-TD



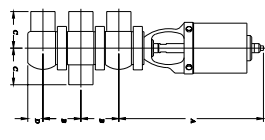
MODEL W62-CD



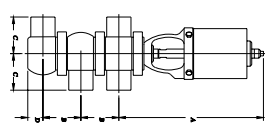
MODEL W62-TS



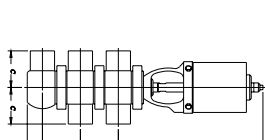
MODEL W62-TS



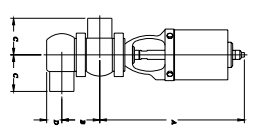
MODEL W62-TCS



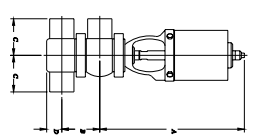
MODEL W62-TCS



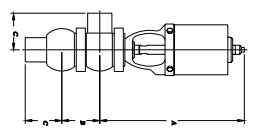
MODEL W62-TCS



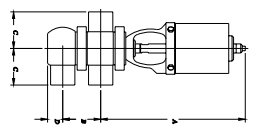
MODEL W63-T



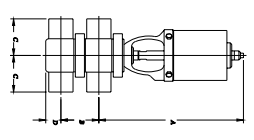
MODEL W63-TD



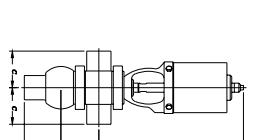
MODEL W63-TS



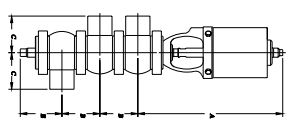
MODEL W63-CS



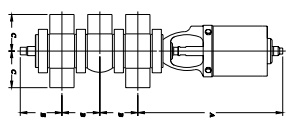
MODEL W63-CD



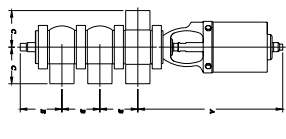
MODEL W63-CS



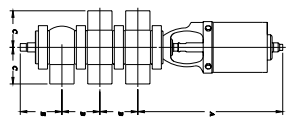
MODEL W65-T



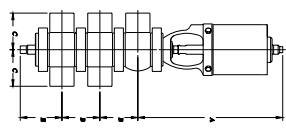
MODEL W65-TD



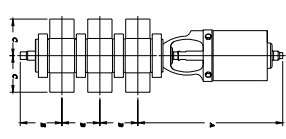
MODEL W65-TD



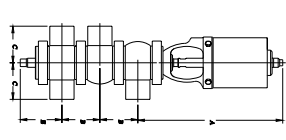
MODEL W65-TS



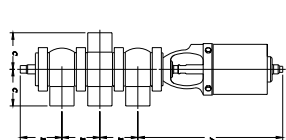
MODEL W65-TS



MODEL W65-TS



MODEL W65-TS



MODEL W65-TS